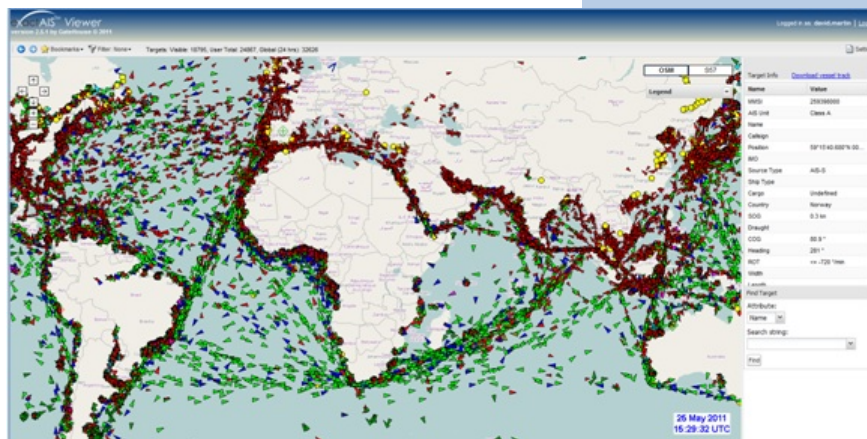


User Manual



**Contents**

- DISPLAY OPTIONS..... 2
- NAVIGATIONAL BUTTONS..... 2
- BOOKMARKS ..... 2
  - How to Apply Bookmarks..... 2
- FILTERS ..... 3
  - How to Apply Filters..... 3
  - How to Create Multiple-Criteria Filters ..... 3
- SHIPLIST..... 4
  - How to Use Shiplist ..... 4
  - Customizing Shiplist ..... 4
    - Sorting Shiplist ..... 4
    - Adding and Removing Fields..... 4
- SHIP TOTALS..... 5
- SETTINGS..... 5
- SEARCHING FOR SHIPS..... 6
  - How to Search for Ships..... 6
  - Changing the Ship Track..... 6
  - How to Download Vessel Tracks..... 7
- CONTACT US ..... 7

exactAIS™ Viewer is a web-based application which enables you to view all current vessel positions produced by the exactAIS™ service and plots them on a familiar set of GIS map layers to enhance the viewing experience. Users can selectively filter the display to only include ships or areas of interest around the world and also provides familiar navigational controls. Access to the system is provided by exactEarth through a web browser URL along with login credentials.

## DISPLAY OPTIONS

Please note you have two display options located at the top right of the screen: S57 or Open Street Map:

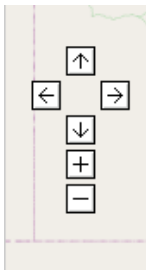
S57- Nautical Charts

Open Street Map- General Overview Map

## NAVIGATIONAL BUTTONS

These buttons are located on the top left of the screen. Here you can move the screen up, down, left and right as well as zoom in (+) and zoom out (-). You can use these buttons to change the view on the map or you can simply click and drag the page in the direction you wish the map to go.

NOTE: If using a mouse with a wheel, you can scroll forward to zoom in and scroll back to zoom out.



## BOOKMARKS

Along the top row is a bookmark tab. You can use this feature to quickly get to map positions that you frequently want to monitor.

### How to Apply Bookmarks

- 1) Once your screen is set to your preferred map location, click the Bookmark tab and choose 'Add Bookmark'.
- 2) The system will then prompt you to name the bookmark. Once you click 'OK', the Bookmark will now be in your pick list for future reference.
- 3) To edit or delete a bookmark, select 'Edit Bookmark' from the dropdown and choose the one you wish to re-name or delete altogether.

## FILTERS

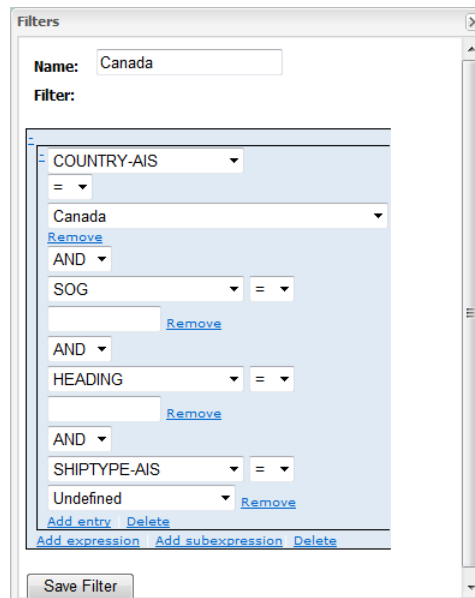
Located next to Bookmarks on the top row is Filter, where you can set up search parameters that will give you the most precise results for your particular search.

### How to Apply Filters

- 1) Click on 'Manage Filters' and click the filter symbol with the plus sign.
- 2) You will be prompted to name the filter for future reference and then click 'Add Filter'.
- 3) Now from the dropdown menu you can limit your findings to show only your preferred and specific criteria. Choose from filters such as Country, Speed over Ground (SOG), Ship Type, Destination, etc.
- 4) Click 'Save Filter'.
- 5) To apply this filter, select it from the filter tab dropdown. You will see vessels meeting the criteria are shown in blue, while vessels that do not are shown in red.
- 6) To show only ships that meet your criteria, click on 'Show Only Positives' from the dropdown on the filter tab.

### How to Create Multiple-Criteria Filters

- 1) To have more than one search filter, you then click 'Add Entry' to include a second criteria choice.
- 2) Once you have created the filter to your preference, click 'Save Filter'.
- 3) Once you have applied the filter and you later decide you want to search without filters, select 'None' from the dropdown.



*Example shows multiple criteria filter searching by Country, Speed over Ground, Heading and Ship Type*

## SHIPLIST

Located beside Filter is the Shiplist button. Here you can download a spreadsheet of all ships listed in the current view. This list can be converted into a .csv file to export into Excel or other spreadsheets.

### How to Use Shiplist

- 1) Once you have located your desired map position, click 'Shiplist' and it will generate a spreadsheet of all vessels in that current view.

Shiplist

Show only ships inside view 291 ships in list

MMSI	Type	Name	IMO	Callsign	Ship Type	Cargo	Draught	Country	Destination
205476000	Class A	CELANDINE	9183984	ONDN	Cargo	Undefined	5.3 m	Belgium	DUBLIN
209239000	Class A	FEDERAL ELBE	9230000	P3PY9	Cargo	Undefined	10.9 m	Cyprus	PARANAGU...
209433000	Class A	ATLANTIS PRIDE	9214549	P3VK8	Cargo	Undefined	9.9 m	Cyprus	LAS PALMAS
209616000	Class A					Undefined		Cyprus	
210819000	Class A	CMA CGM AMERICA	9295971	5BNC2	Cargo	Category A	11.2 m	Cyprus	TANGER MED
210897000	Class A	PROIKONISSOS	8309725	P3CD6	Cargo	Undefined	11.2 m	Cyprus	ROTTERDAM
211128000	Class A	MONTE CERVANTES	9283186	DHTK	Cargo	Undefined	12.7 m	Germany	BR SSZ>M...
211238930	Class A	HELEN MARY	9126364	DQLI	Fishing	Undefined	7.3 m	Germany	!
211858000	Class A					Undefined		Germany	
211892000	Class A	MSC GENEVA	9320427	DDJH2	Cargo	Undefined	11.7 m	Germany	SUAPE
212174000	Class A	M/V VASI	9435806	5BMV2	Tanker	Undefined	8.0 m	Cyprus	NOUADHBOU
212255000	Class A	CHOPIN	8513728	P3GA7	Cargo	Undefined	5.8 m	Cyprus	V.D.C
212954000	Class A	SAFMARINE TEXAS	8421975	P3SY8	Cargo	Undefined	9.8 m	Cyprus	CAMDEN
215020000	Class A	M/V IGNACY DASZYNSKI	8502561	9HZV6	Cargo	Undefined	10.7 m	Malta	LAS PALM...
215389000	Class A	M/T GOVIKEN	9344203	9HA2718	Tanker	Category B	6.2 m	Malta	PTO DE SA...
215571000	Class A	ELBRUS	9276030	9HUB7	Tanker	Category C	7.4 m	Malta	AMSTERDAM
215604000	Class A	ATHENS TRADER	9070175	9HA2766	Cargo	Undefined	8.6 m	Malta	LAS PALMAS
215832000	Class A	NORTH PRINCESS	9123128	9HCL8	Cargo	Undefined	8.8 m	Malta	PARANAGUA

Save as CSV OK

*Ship List generates a report of all ships in your current view organized by MMSI, Type, Name, IMO, etc.*

## Customizing Shiplist

### Sorting Shiplist

- 1) Place your mouse over the heading field you wish to sort, an arrow will appear at the far right. Click this arrow to bring up the customization dropdown.
- 2) There are two sorting options 'sort ascending and sort descending', choosing one of these options will sort the field you have chosen.

### Adding and Removing Fields

- 1) Bring up the Customization dropdown by placing your mouse over any field in the shiplist and clicking the arrow on the right hand side.
- 2) Choose 'Columns' from the dropdown list. This will bring up a list of fields you can choose to include in your shiplist.
- 3) Check or uncheck the fields to add and remove them. Clicking off the dropdown will return you to your list.

## SHIP TOTALS

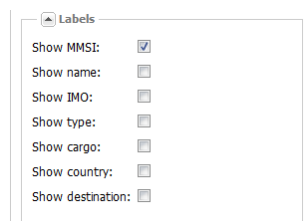
Along the top bar are informational ships total including the number of Visible Targets in your current map view. The User Total shows the number of ships that are available to your account based on your area of interest. Total Global is the number of ships in the exactEarth database over a 24 hour period.



## SETTINGS

The Settings Tab allows you to modify the screen to suit your preferences. Once you have made all your settings selections, click 'Apply' and your settings will be saved.

**Labels** - You can change the information tabs that populate for each vessel when zoomed right in on a particular area. You are able to unclick any of these selections:



**Target**- You can choose to show or hide your target vessel's track or its information pop-up when you hover over the ship.

**History**- Allows you to change the look back time of the vessel track.

**Timeouts** - You can change the time at which targets are lost and ultimately deleted from your view.

**Filter**- You can change the colour coding for your filter presets.

**Legend**- Create a ship legend by choosing either ship type or source type to be displayed on your screen.



Example of a Legend by Ship Type

## SEARCHING FOR SHIPS

On the right hand side of the screen are your Search Fields and Target Information tabs.

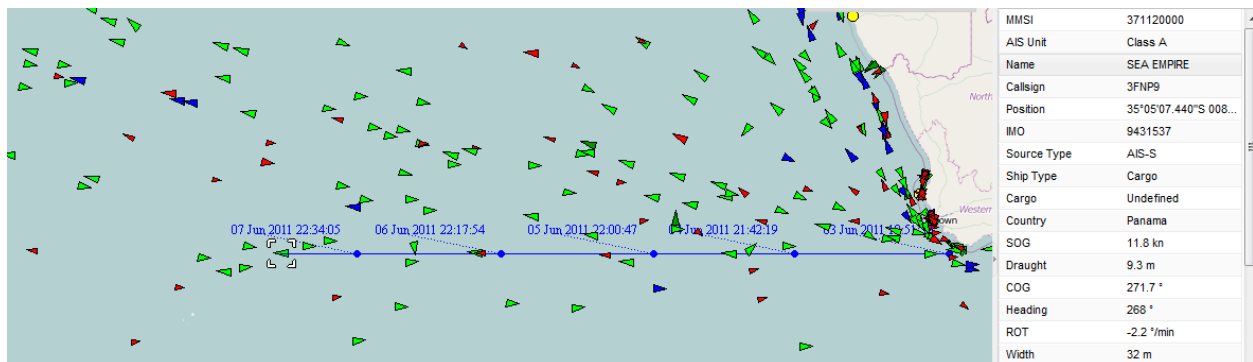
### How to Search for Ships

- 1) If you know the name of the ship, under 'Find Target', click the plus sign to reveal the search fields.
- 2) Under Attribute, select 'Name' and in the 'Search String' field, start to type the name of the ship. You will note that the search field will automatically populate ships in the system starting with those letters. NOTE: You can also search by MMSI, IMO or Call Sign.
- 3) Once the ship you are looking for is selected, click 'Find'. This will then bring you to that particular ship and show its current map position.
- 4) Under 'Target Info', you will see the detailed ship information such as MMSI, Country and Position.

Once exactAIS™ Viewer has located your ship, it will bring you to its current map position. It will also populate the ship track showing timestamps plotting its course. The timestamps show the dates and times at which the ship's AIS signals were received along its track.

### Changing the Ship Track

- 1) To shorten the track or to get an even more detailed history of the ship's course, you can adjust the 'Lookback Time' under 'Settings'. The system is defaulted to lookback 24 hours.
- 2) Click 'Apply' and then 'OK'. Now the track reflects that extended time period.



Example of a Ship Track set to 120 hours Lookback Time

## How to Download Vessel Tracks

- 1) Click beside 'Target Info' on 'Download Vessel Track'. This will populate an excel spreadsheet with the vessel's coordinates for the lookback time. Here you can see the ship's latitude and longitude that corresponds with each timestamp.

Timestamp	MMSI	IMO	Call sign	Name	Latitude	Longitude
6/4/2011 17:25:24	316003800	6823052	CFK9610	SEASPAN	48.4817	-122.743
6/4/2011 17:26:24	316003800	6823052	CFK9610	SEASPAN	48.4785	-122.743
6/4/2011 19:23:23	316003800	6823052	CFK9610	SEASPAN	48.2022	-122.81
6/4/2011 19:25:02	316003800	6823052	CFK9610	SEASPAN	48.2007	-122.808
6/4/2011 19:26:02	316003800	6823052	CFK9610	SEASPAN	48.1997	-122.807
6/4/2011 19:27:02	316003800	6823052	CFK9610	SEASPAN	48.1986	-122.806
6/4/2011 20:56:36	316003800	6823052	CFK9610	SEASPAN	48.0702	-122.661
6/4/2011 20:57:05	316003800	6823052	CFK9610	SEASPAN	48.0693	-122.66
6/4/2011 20:58:36	316003800	6823052	CFK9610	SEASPAN	48.0664	-122.659
6/4/2011 20:59:16	316003800	6823052	CFK9610	SEASPAN	48.0652	-122.659
6/4/2011 21:00:46	316003800	6823052	CFK9610	SEASPAN	48.0623	-122.658
6/4/2011 21:01:46	316003800	6823052	CFK9610	SEASPAN	48.0604	-122.658
6/5/2011 8:35:10	316003800	6823052	CFK9610	SEASPAN	47.8448	-122.453
6/5/2011 8:39:49	316003800	6823052	CFK9610	SEASPAN	47.8589	-122.457

*Download Vessel Track generates an Excel spreadsheet of the vessel's positional coordinates over the last 5 days*

This feature allows for in depth analysis on the vessel to know exactly where the vessel is and the detailed course it took to get there.

exactAIS™ Viewer offers you a simple to navigate interface that also delivers all the information you are looking for when monitoring ship movements. exactAIS™ is dynamic information that has great uses in all maritime surveillance applications. Using exactAIS™ Viewer you can quickly get the information you need for complete maritime domain awareness.

## CONTACT US

If you experience any issues while running exactAIS™ Viewer, please contact our exactEarth service desk either by e-mail at [servicedesk@exactearth.com](mailto:servicedesk@exactearth.com) or by phone at +1 (519) 620 5850.