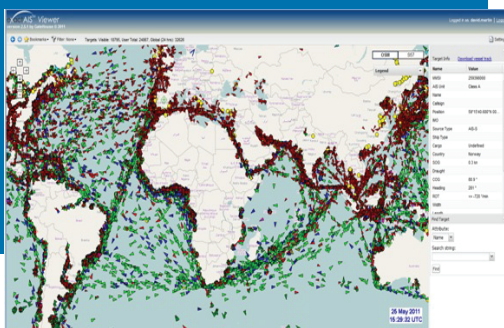


Display all currently detected vessel positions included in your exactAIS™ Subscription

exactAIS™ Viewer is a web-based application that enables you to view all current vessel positions produced by the exactAIS™ service and plot them on a familiar set of GIS map layers. You can selectively filter the display to only include ships or on any AIS datafield around the world. Familiar navigational controls make exactAIS Viewer easy to use. We provide secure login credentials to enable access via your standard web browser.



Note: Supported Browsers include Internet Explorer 8.0 and 9.0, Firefox 3.6.x and 4.x.

MMSI	Type	Name ▲	IMO
366897820	Class A	CHARLES D MCALLISTER	6801418
367094730	Class A	CHARLES HUGHES	569489000
367168640	Class A	CHARLESTON EXPRESS	9243162

Ship List generates a spreadsheet of all vessels in your current view

exactAIS™ Viewer Features:

Global Zoom & Navigation

Users may zoom and navigation options. Pre-define and store preferences on a user-by-user basis.

Filtering

Any AIS message field (such as destination, type of cargo or MMSI number) can be used to filter either singularly or as a combination of multiple fields and conditions. Filter the display to narrow targets of interest by using either the pre-loaded filters by ship type or custom filters.

Bookmarks

Define user bookmarks to quickly navigate to frequently accessed areas.

Search Tools

Find specific vessels based on name, MMSI, IMO or Call sign using multiple search features.

Target on Ships

View and track specific targets and show all target information.

Ship List

Display a list of all vessels currently in the coverage area which can be sorted, expanded, minimized and exported.

Download Tracks

View the 5 day track of any vessel to see the latitude and longitude points along the vessel's course over a 5 day period.

Statistics

Ship counts in your view. Filtered and Global update on your display as you change zoom levels.

Technical Support

exactAIS™ Viewer is fully supported by our highly skilled exactEarth service desk. The team is available 24/7 to answer any technical questions or to troubleshoot any issues.



For more information about exactAIS™ Viewer, contact our sales team at sales@exactearth.com or visit our website www.exactearth.com.